



MOTION & CONTROL TECHNOLOGY ▷ LINEAR ▷ ROTATIVE ▷ DIRECT ▷ CONVENTIONAL

TAKE THE LEAD

LINEAR MOTION
TECHNOLOGY GMBH

KMML[®]

TAKE THE LEAD WITH
INNOVATION & PASSION



TAKE THE LEAD

ENTER A NEW WORLD OF DYNAMICS AND PRECISION:

As a competent, experienced and professional partner for system solutions, it is our task to fulfil your individual needs

and to comply with the high demand for dynamics, precision, efficiency and reliability.



WITH US.

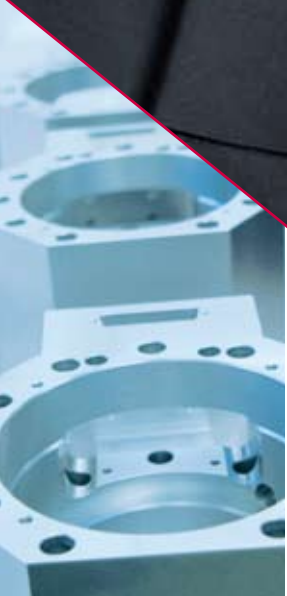


TAKE THE LEAD

WITH INNOVATION & PASSION.

OUR HEART BEATS FOR SOLUTIONS WHICH INCREASE YOUR PRODUCTIVITY: As the leading innovation specialist regarding complete system solutions with linear and rotative direct drives as well as a wide range of the conventional technology, we plan and implement complex standardised as

well as individual solutions for and together with you. Provide us with new challenges! As impassioned technicians we looking forward to ensuring you a clear competitive advantage with our high-quality system solutions and ongoing commitment.





Our success is due to product quality, flexibility and innovative strength. Moreover, our success is carried by our employees.



TOGETHER TO THE TOP

Consulting, development, construction, manufacture, assembling, implementation: We have been operating in the high-quality segment of automation technology, engineering and plant construction with our manifold products and services since 1994.

Our portfolio covers a wide range – from single components to tailor-made complete systems as well as an extensive range of additional services. You receive competent technical consultation for every application from simple to complex applications including the corresponding high-quality solution.

Our standard solutions are based on an established modular system which allows for a broad application spectrum. The additional choice of accessories is particularly extensive.

Our experience, development competence and construction know-how ensure a rapid winding-up, perfect implementation and the highest flexibility even with individual solutions thus realising innovative systems for your particular applications which provide the highest dynamics and positioning accuracy.

- standard linear motor systems, torque motors, single and multi axial solutions, customised solutions and components
- high development and construction competence
- integral mechanic and electronic know-how
- high flexibility and short-term implementation of special requests
- production of system solutions for plug-and-play
- multitude of successfully implemented applications



QUALITY, STABILITY, SECURITY

FROM THE FIRST CONSULTATION TO ONGOING ASSISTANCE: To guarantee optimal functionality, handling and efficiency, we place great demands on ourselves. You will personally benefit from this during the entire process.

Conception

Wide range of knowledge in:

- mechanics
- electronics
- measurement and test engineering
- drive and control technology
- programming and visualisation

Construction and Development

Years of experience in the implementation of individual system solutions with conventional and direct drive technologies through:

- synergetic networking the different drive technology sectors with mechanical construction
- wide-ranging manufacturing knowledge from cost-efficient prototypes to mass production
- professional application of new technologies
 - CFK and ceramic materials
 - Various coating technologies (nanotechnology)
 - New production methods to raise cost-efficiency
- use of integral concepts in conjunction with casting technologies to optimise function, production and cost.
- 3D CAD systems with integrated FEM-Software allow for a construction with optimised, rigidity, strength, vibration and is thermally optimised

Quality Assurance

Process consulting and monitoring through:

- comprehensive measuring equipment
- qualified testing processes
- preclusion of errors from the development stage on with failure mode and effect analysis (FMEA)

Manufacturing

Implementation of sophisticated single and multiple axis solutions

- in flexible production areas for a large range of quantities
- with a wide range of equipment for just about every branch of industry
- for clean room applications (up to clean room Class 3 according to JIS 9920)

Start-up and Measuring

High quality, speedy and reliable equipment start-up.

- KML factory start-up
- customer specific tests with logging and measuring

Service and Training

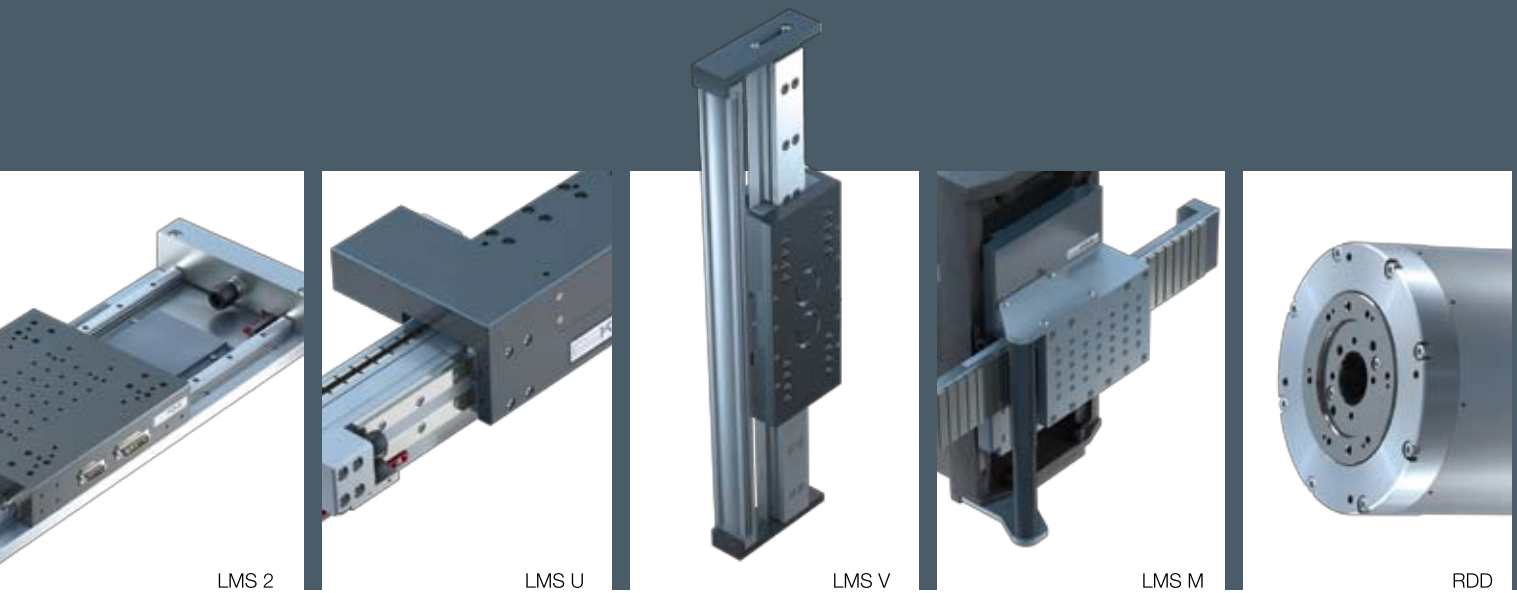
Always up to date.

- 24-hour-hotline
- on-site customer start-up
- employee training



TAKE THE LEAD

WITH DYNAMICS & PRECISION.



▶ STANDARD LINEAR MOTOR SYSTEMS AND TORQUE MOTORS SERIES RDD

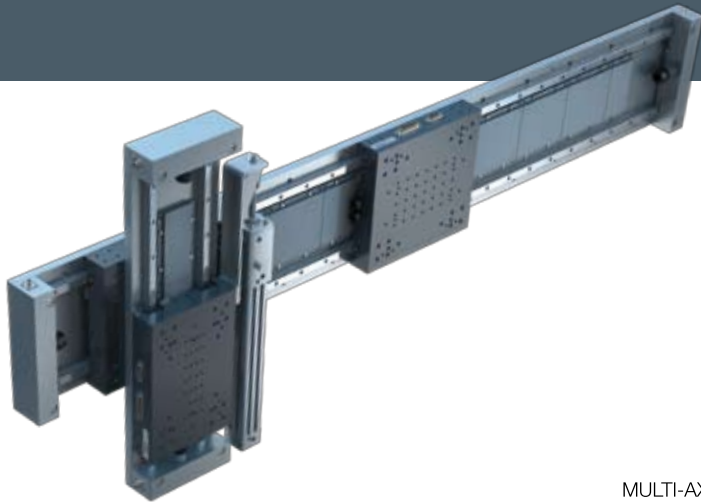
Standard linear motor systems

Dynamic, precise, plug-and-play, low-maintenance, reliable processes: Our standard motor systems LMS 2, LMS U, LMS V and LMS M were developed to position a wide load range with highest dynamics precision.

Each series is characterised by a multitude of different features which offer particular advantages for the characteristic demands of the respective field of application. All models are characterised by high performance, positioning accuracy and compact construction. They are also available in different installation sizes as well as engine-power classes with the appropriate accessories and therefore perfectly aligned for your particular requirements.

Torque Motor Series RDD

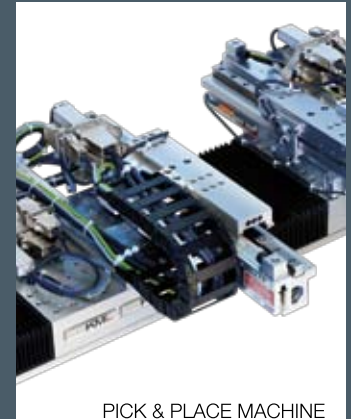
The torque motors of the RDD series are accomplished with an upright or hollow shaft according to requirements and dispose of a very high power density. Therefore, continuous precise motions and positions are achieved even at high duration and peak moments which are combined with revolutions in the upper ranges. In the standard version, three installation sizes with different power options are available.



MULTI-AXIS



ROBOT



PICK & PLACE MACHINE

▶ MULTI-AXIS SOLUTIONS AND CUSTOMISED SOLUTIONS

All linear motor systems and torque motors are possible as multiple axis solutions.

All standard linear and torque motors can be combined to create ready to plug in multiple axis solutions, including energy chains, cables and controls.

These solutions are appropriate for almost every intended use. The application of standardised power-assisted actuators and motion controlling which has been tested and qualified in connection with the KML product program offers additional advantages.

Customised solutions

Everything is possible: In addition to the extensive standard program, we develop tailor-made individual solutions which are precisely optimized according to your requests in order to accurately comply with the tasks you define. Customised solutions which fulfil all your demands and correspond with your ideas are developed in close cooperation with you – from the development of the prototype to the serial production. In order to find cost-effective as well as rapidly disposable solutions we revert to the varied modular system of our standard solutions.





LINEAR ACTUATOR



LINEAR SYSTEMS



POWER-ASSISTED ENGINES

▶ LINEAR TECHNOLOGY COMPONENTS

Modules, actuators, linear bearings, power-measuring systems: Due to their constructive features, the linear technology components are suitable for all engine-power classes, from fine-mechanics to the industrial-plant construction.

Our partners are international manufacturers and have been successful players on the market for decades. The approved cooperation, continuous research and development of new products as well as our competent consulting ensure your significant innovation advantage.

- linear systems (positioning systems, positioning plates, linear modules)
- linear actuators
- actuators, regulators, controllers (power-assisted engines, stepper motors, planetary gear, power-assisted regulators, stepper motor control, train controlling, cables)
- linear actuators (ball screws, thread rolling screw drives, ends bearing units)
- linear rails (ball bushing, ball track systems, roller guidings, rail guidings)



BALL SCREWS



RAIL GUIDINGS



ASSEMBLED CABLING



MOTION CONTROLLER



▶ ACCESSORIES

It goes without saying that all KML systems and components from our product range are delivered with the corresponding accessories as per your requirements in order to increase functionality, ease handling and shorten your integration time even more.

- inherent stiffness
- assembling accessories
- energy chains
- confectioned wires and cables
- power-assisted regulators
- motion controller
- controlling and visualisation
- software

▶ SERVICES

All systems are checked for functionality before they are delivered. When the order is placed, a parameter set for a quick and simple initial operation is delivered with the accessories (cables, actuators, Motion Controller). If desired, defined motion sequences can be simulated and protocolled. Furthermore an optional measurement and protocol of the system accuracy is possible with a laser interferometer.

A corrective matrix can be created for positioning applications in the sub- μm area after clearance from the customer. The mechatronic assemblies with visualisation software solutions allow a fast integration of our system solutions with your equipment. Initial operation and on-site maintenance as well as training round out our services.

TAKE THE LEAD

WITH TRUST & SECURITY.



ABSOLUTE RELIABILITY TO INCREASE YOUR COMPETITIVE CAPABILITY: We have been developing, producing and distributing high-quality and innovative system solutions for more than 15 years. The aim of our work is to comply with your individual requirements and to fulfil and exceed your personal requests.

For us, trust, fairness and security are basic values in our relationship with our business partners. On this basis, we realise practise-oriented and efficient solutions with future-

oriented technology. Due to the ongoing pursuit of this goal, the name KML LINEAR MOTION TECHNOLOGY is associated with competence, innovation and reliability by our customers.

Experience that creates trust. In this way we make a significant contribution to your success and take the lead together.

Take the lead – with trust and security.



KML Linear Motion Technology GmbH

Headquarters

Daumegasse 1-3, A-1100 Wien
Telephone: +43 1 6415030 0, Fax: +43 1 6415030 50
E-mail: office@kml.at, Web: <http://www.kml.at/>

Sales Austria

Daumegasse 1-3, A-1100 Wien
Telephone: +43 1 6415030 35, Fax: +43 1 6415030 50
E-mail: office@kml.at, Web: <http://www.kml.at/>

Sales Office Germany

Mauerstrasse 8, D-98527 Suhl
Telephone: +49 3681 453789 10, Fax: +49 3681 453789 20
E-mail: office@kml.at, Web: <http://www.kml.at/>

Sales Office Benelux

Visiting address:
High Tech Campus 9 "Unit 005"
5656 EA Eindhoven
Postal address:
Postbox 775, 5600 AT Eindhoven
Telephone: +31 0 40 8517030, Fax: +31 0 40 8517039

